

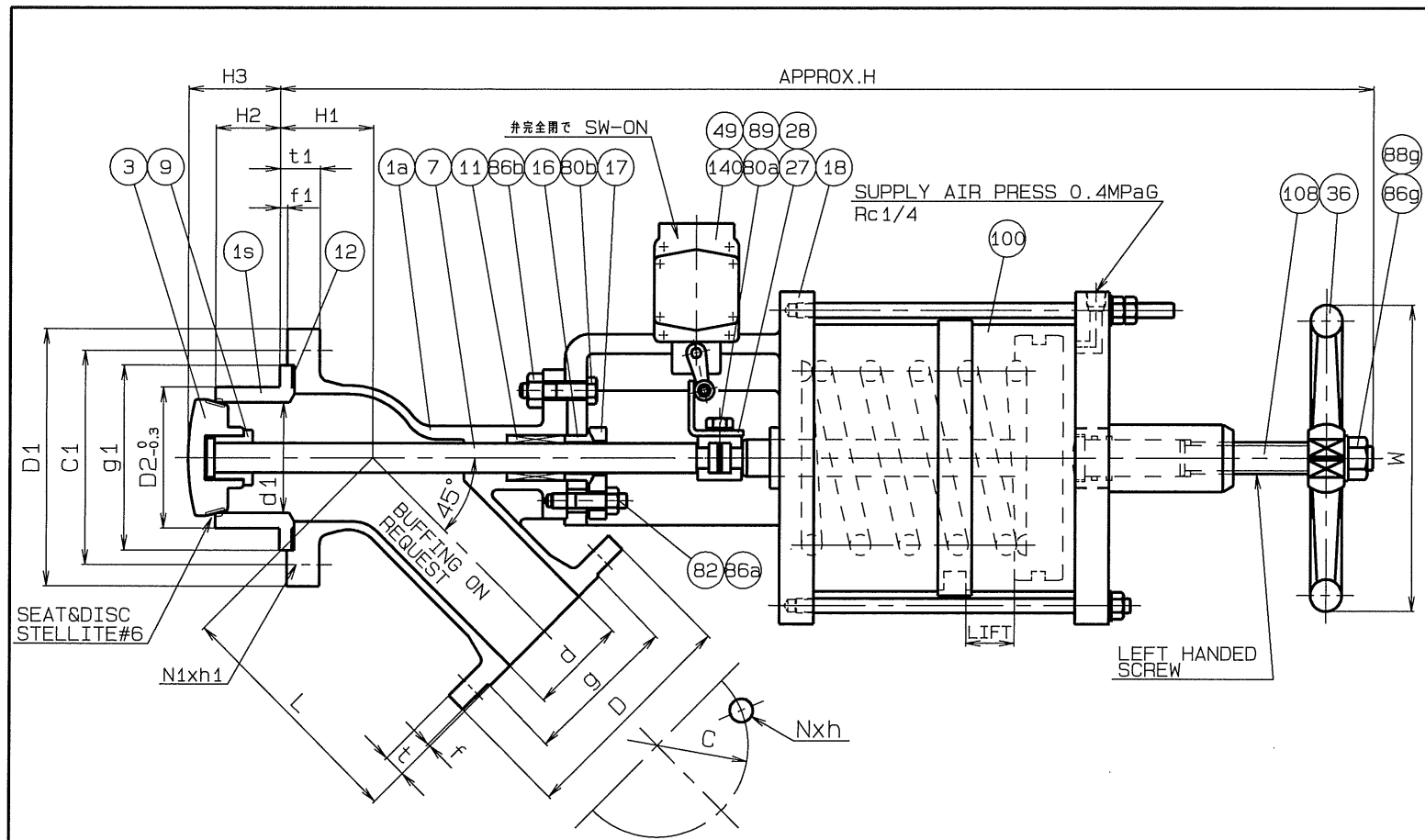
DESIGN PRESS. 1.0 MPa G
 DESIGN TEMP. 150 °C
 OPERATING PRESS. MPa G
 OPERATING TEMP. °C

REFERENCE ONLY

-DIMENSIONS SUBJECT TO CHANGE WITHOUT NOTICE
 -COPYING IS PROHIBITED WITHOUT OUR PRIOR PERMISSION
 -ASKA CORPORATION
 458-1 Minosho-cho, Yamatokoriyama-city, Nara JAPAN
 (81)743-54-2455

SIZE (mm)		OUTLET 10K RF									INLET 10K RF									Qty					
OUT	IN	d	D	C	N	h	t	f	g	d1	D1	C1	N1	h1	t1	f1	g1	D2	H		H1	H2	H3	L	LIFT
20	25	20	100	75	4	15	14	1	56	25	125	90	4	19	26	6	67	36	665	42	20	35	135	30	
25	40	25	125	90	4	19	14	1	67	30	140	105	4	19	28	6	81	48	675	48	25	40	140	30	
40	50	40	140	105	4	19	16	2	81	45	155	120	4	19	30	6	96	63	700	52	25	40	165	37	
50	80	50	155	120	4	19	16	2	96	55	185	150	8	19	32	6	126	80	730	69	30	45	170	37	
80	100	80	185	150	8	19	18	2	126	85	210	175	8	19	32	6	151	115	870	73	35	55	240	45	
100	150	100	210	175	8	19	18	2	151	110	280	240	8	23	36	6	212	145	920	96	40	60	250	45	

REV.				
140	LIMIT SWITCH	1LX7001-J	1	AZBIL
100	CYLINDER	STKM13A+SS400	1	HARD COATED
89	S. WASHER	SWRH57	2	
86b	HE'X NUT	S45C	4	
86a	GLAND NUT	SUS304	2	
82	GLAND BOLT	SUS304	2	
80b	HE'X BOLT	SCM435	4	
80a	HE'X BOLT	SS400	2	
49	BRACKET	SS400	1	
28	INDICATOR	SS400	1	
27	STEM LOCK	SS400	1	
18	YOKE	FC200	1	or SS400
17	GLAND PLATE	SUS304	1	
16	GLAND	SUS304	1	
12	GASKET	PTFE-G20	1	
11	PACKING	T/#9034+PTFE-G20	1 ⁵	
9	SWIVEL NUT	SUS	1	
7	STEM	SUS	1	
3	DISC	SUS	1	
1s	SEAT	SUS	1	
1a	BODY	SCS	1	
No	NAME	MATERIAL	QTY	REMARKS
	HARD FACING OF SURFACE	DISC SEAT BODY SEAT		STELLITE#6 STELLITE#6
	HYDROSTATIC TEST	CYLINDER		AIR 0.7
		SEAT		1.1
		BODY		1.5
DATE	13.5.28	SCS		
APPROVAL		JIS 10K- RF FLANGE		
CH.		CYLINDER OPERATED		
DWN.	M.H	FC-TYPE TANK VALVE		
SCALE				
3rd ANGLE PROJECTION	DWG.No	K-TO-L-1029		
ASKA CORPORATION				



DESIGN PRESS. 1.0 MPa G
 DESIGN TEMP. 150 °C
 OPERATING PRESS. MPa G
 OPERATING TEMP. °C

REFERENCE ONLY

-DIMENSIONS SUBJECT TO CHANGE WITHOUT NOTICE
 -COPYING IS PROHIBITED WITHOUT OUR PRIOR PERMISSION
 -ASKA CORPORATION
 458-1 Minosho-cho, Yamatokoriyama-city, Nara JAPAN
 (81)743-54-2455

SIZE (mm)		OUTLET 10K RF									INLET 10K RF									D2	H	H1	H2	H3	L	LIFT	W	Qty			
OUT	IN	d	D	C	N	h	t	f	g	d1	D1	C1	N1	h1	t1	f1	g1														
20	25	20	100	75	4	15	14	1	56	25	125	90	4	19	26	6	67	36	785	42	20	35	135	30	140						
25	40	25	125	90	4	19	14	1	67	30	140	105	4	19	28	6	81	48	795	48	25	40	140	30	140						
40	50	40	140	105	4	19	16	2	81	45	155	120	4	19	30	6	96	63	875	52	25	40	165	37	180						
50	80	50	155	120	4	19	16	2	96	55	185	150	8	19	32	6	126	80	910	69	30	45	170	37	180						
80	100	80	185	150	8	19	18	2	126	85	210	175	8	19	32	6	151	115	1070	73	35	55	240	45	250						
100	150	100	210	175	8	19	18	2	151	110	280	240	8	23	36	6	212	145	1120	96	40	60	250	45	250						

No	NAME	MATERIAL	QTY	REMARKS
140	LIMIT SWITCH	1LX7001-J	1	AZBIL
108	SPINDLE	SUS403	1	
100	CYLINDER	STKM13A+SS400	1	HARD COATED
89	S. WASHER	SWRH57	2	
88g	WASHER	SS400	1	
86g	HE 'X NUT	SS400	1	
86b	HE 'X NUT	S45C	4	
86a	GLAND NUT	SUS304	2	
82	GLAND BOLT	SUS304	2	
80b	HE 'X BOLT	SCM435	4	
80a	HE 'X BOLT	SS400	2	
49	BRACKET	SS400	1	
36	HAND WHEEL	FC200	1	
28	INDICATOR	SS400	1	
27	STEM LOCK	SS400	1	
18	YOKE	FC200	1	or SS400
17	GLAND PLATE	SUS304	1	
16	GLAND	SUS304	1	
12	GASKET	PTFE-G20	1	
11	PACKING	T/#9034PTFE-G20	1 ^S	
9	SWIVEL NUT	SUS	1	
7	STEM	SUS	1	
3	DISC	SUS	1	
1s	SEAT	SUS	1	
1a	BODY	SCS	1	

No	NAME	MATERIAL	QTY	REMARKS
	HARD FACING OF SURFACE	DISC SEAT		STELLITE#6
		BODY SEAT		STELLITE#6
HYDROSTATIC TEST		CYLINDER		AIR 0.7
		SEAT		1.1
		BODY		1.5

DATE	13.5.28	SCS
APPROVAL		JIS 10K- RF FLANGE
CH.		CYLINDER OPERATED
DWN.	M.H	FC-TYPE TANK VALVE
SCALE		
3rd ANGLE PROJECTION	DWG.No	K-TO-L-1030

ASKA CORPORATION